

An **Evacuation Alert** has been issued by the Columbia Shuswap Regional District at the Shuswap Emergency Program's Emergency Operations Centre. A wildfire burning in the area of Two Mile Creek near the Boundary of the District of Sicamous and the CSRD's Electoral Area E is growing and may pose a danger. Due to the potential danger to life, health or property, an **Evacuation Alert** is in effect for the following areas:

The community of Swansea Point including both sides of Highway 97A north to the District of Sicamous municipal boundary.

*Please see the attached map of the Evacuation Alert Area as part of this Alert*

An **Evacuation Alert** is a warning about a potential threat to life and/or property. It is intended to give you time to be ready for a possible evacuation. Residents will be given as much advance notice as possible prior to evacuation, however, you may receive limited notice due to changing conditions.

## WHAT YOU SHOULD YOU DO WHEN AN ALERT IS IN EFFECT

Upon notification of an **ALERT**:

- **All residents** self-register with Emergency Support Services online through this link: <https://ess.gov.bc.ca/> You can also search this on Google using the term *BC Evacuation Registration and Assistance*. When registering, please indicate your community as **Swansea**. **This step is critical as it provides important information in case of an evacuation.**
- Locate your grab-and-go bags for you and your family. Gather essential items such as medications, eyeglasses, valuable papers, immediate care needs for dependents. Replenish any items that have expired or need replacement, ensure you and your family members have enough clothing and incidentals for a 72-hour period and have these items readily available for quick departure. See [www.preparedbc.ca](http://www.preparedbc.ca) for details.
- Contact family members, advise them of the situation and determine a meeting location outside of the evacuation area where you can safely reconnect should the area be evacuated.
- Accommodation in the Shuswap area is extremely limited at this time. Arrange to stay with family or friends, if possible.
- Arrange transportation for all household members. Prepare to move any disabled persons and/or children. Fill the gas tanks of personal vehicles.



# EVACUATION ALERT

July 21, 2021 – 19:00 Hours

---

- Take care of your pets by moving them to a safe location (including horses and hobby farm animals).
- Emergency Support Services cannot provide support to visitors to the area or those with secondary dwellings. People visiting the area should consider relocating at this time.
- Regularly monitor the CSRD website, [www.csr.bc.ca](http://www.csr.bc.ca), the Shuswap Emergency Program's (SEP) webpage at [www.shuswapemergency.ca](http://www.shuswapemergency.ca), the Shuswap Emergency on Facebook and Twitter, the CSRD's Facebook, Twitter platforms or local news sources for up-to-date and accurate information.

For update on wildfire information, see the BC Wildfire Service at [www.bcwildfire.ca](http://www.bcwildfire.ca)

**For more information, contact:**  
CSRD Emergency Operations Centre  
Phone: 250.833.3350

A handwritten signature in black ink, appearing to read "D. Sutherland", is written over a horizontal line.

July 21, 2021

---

Derek Sutherland, Emergency Operations Centre Director



# EVACUATION ALERT

Date Effective  
2021-JULY-21  
1900 Hours

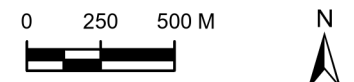
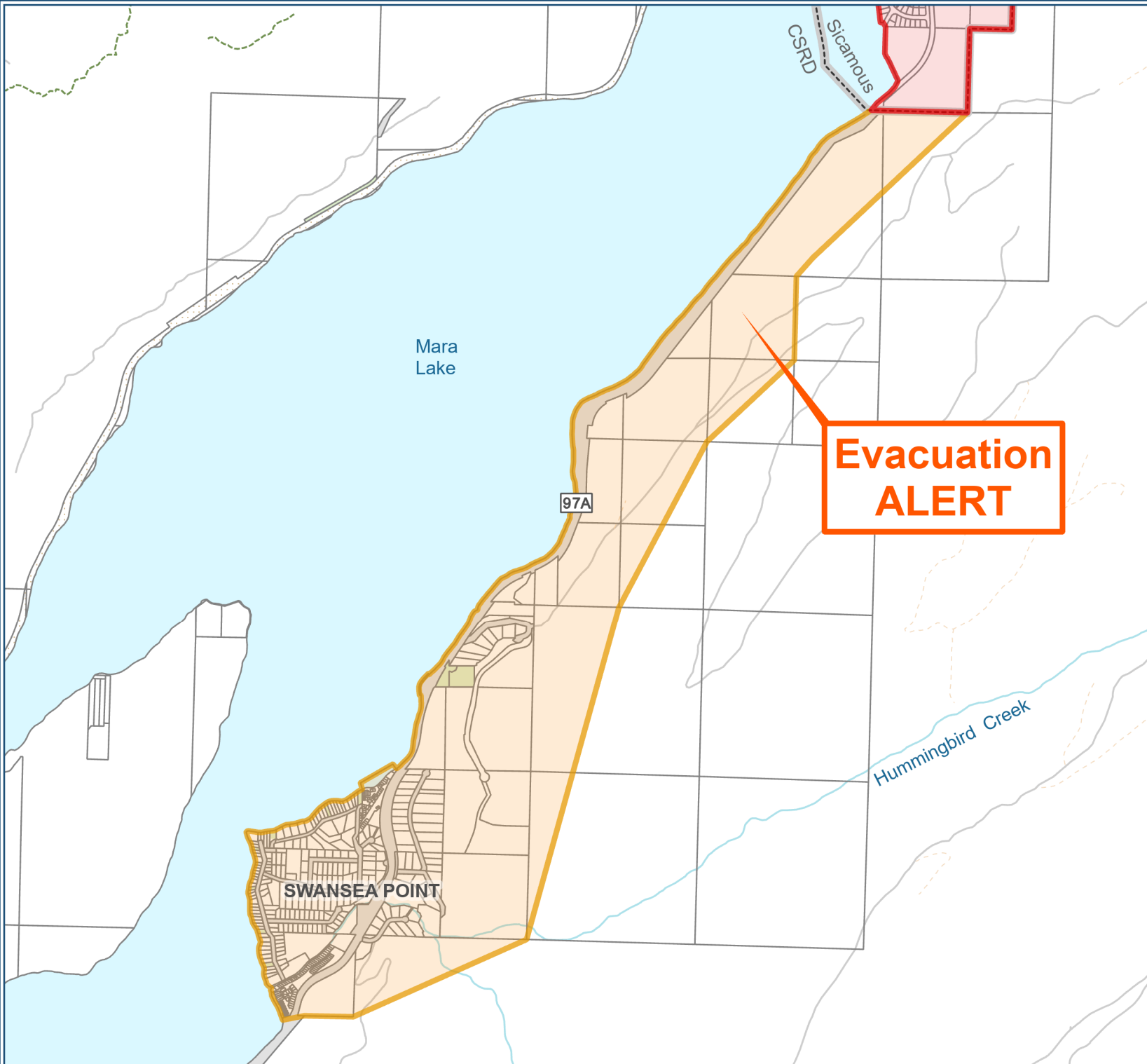
 Area Under Alert

### Affected Areas:

All residences within the community of Swansea Point and all residences on both sides highway 97A from Swansea Point north, to the District of Sicamous southern boundary.



**Evacuation  
ALERT**



Scale 1:25,600 (when printed at 8.5" x 11")