


EVACUATION ALERT

Date Effective
2021-JULY-20
1200 Hours

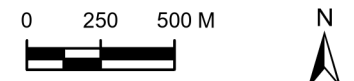
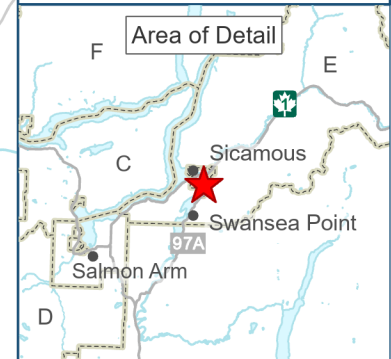
 Area Under Alert

Affected Areas:

All residences within the District of Sicamous that lie to the south of the Trans-Canada Highway (BC Highway 1), south of Stadnicki Road, east of Sicamous Narrows and Mara Lake, and north of Sicamous Creek.

**Evacuation
ALERT**

**Tactical
Evacuation
Initiated**



Scale 1:25,600 (when printed at 8.5" x 11")

