



**Electoral Area 'B'
Official Community Plan
Amendment (CSRD)
Bylaw No. 850-1**

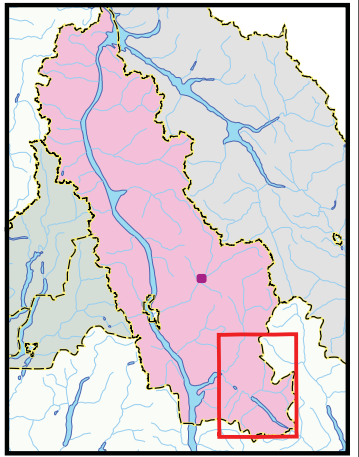
**Schedule B
Overview Maps**

Trout Lake
Map Section 5 of 5

- Electoral Area 'B' OCP Boundary
- Parcel Boundary
- Parcel under Water
- Highway or Road
- Lake
- Stream

- OCP Designations**
- HC - Highway Commercial
- NC - Neighbourhood Commercial
- RC - Resort Commercial
- ID - Industrial
- PI - Public and Institutional
- RR2 - Rural Residential 2
- NR - Neighbourhood Residential
- CD - Cluster Residential Development
- RSC - Rural Resource
- SH - Small Holdings
- PK - Parks and Protected Areas
- FW - Foreshore Water
- RW - Railway Corridor

Overview Map



1:40,000
0 1 2 Km
Scale accurate if plotted on 36x48 inch paper

Date: 2014-Jul-22
File: Sections_OCP850_AreaB_36x48_5TroutLake
Columbia Shuswap Regional District
781 Marine Park Drive NE
Salmon Arm, BC V1E 4P1
250.832.8194

This information was compiled by the CSRD for regulatory and internal reference purposes only. No representation or warranty is made as to the accuracy of this information.

